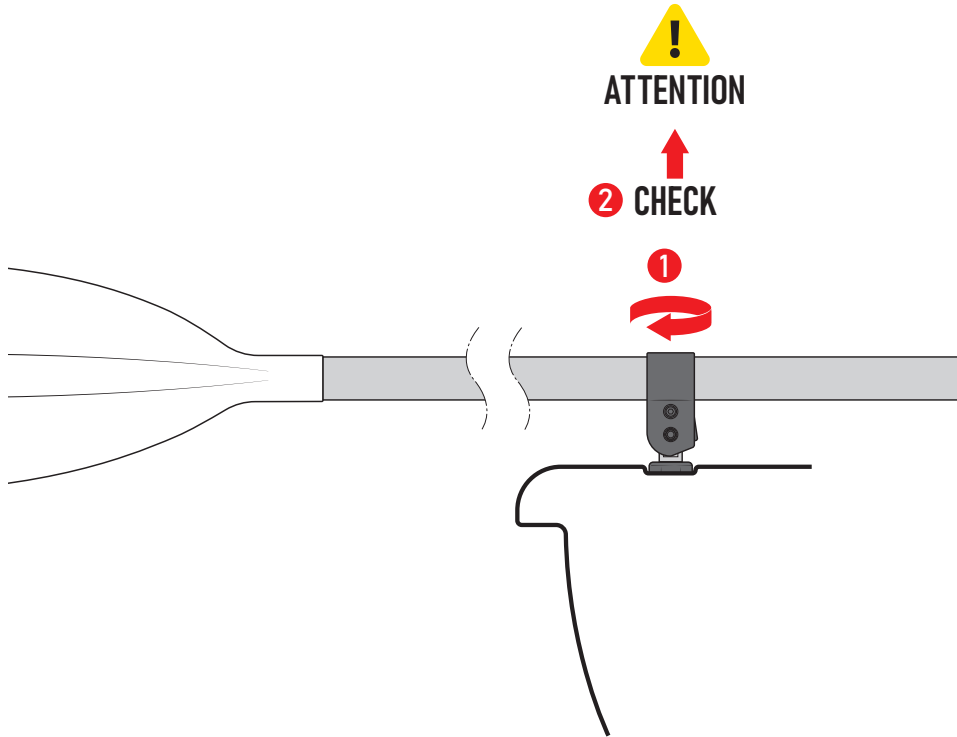




## Fitting the Oars to you boat.

- 1) Once the pin is fully located, rotate the oar assembly so the blade is over the water.
- 2) **WARNING** Now check the oar assembly will not lift up away from the boat.



***You are now ready to go rowing!***



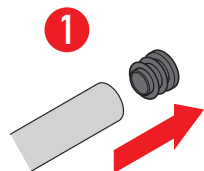
Rowing Kit Instructions  
Version 1.0



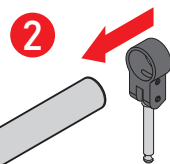


## Attaching the 'Oarlocks' to the paddle

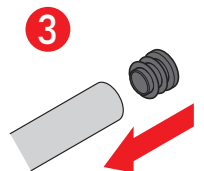
- 1) Remove the end caps from the oar tubes.



- 2) Position the oarlock on the end of the oar, taking care that the 'Flat' on the pin is facing away from the oar blade. Once aligned squarely with the oar tube, push it onto the tube, once it is located on the tube turn the oar up side down, so the oarlock is on the ground. Now use the oar tube to tap the oarlock all the way onto the tube. The oarlock will feel stiff on the tube, this is normal.

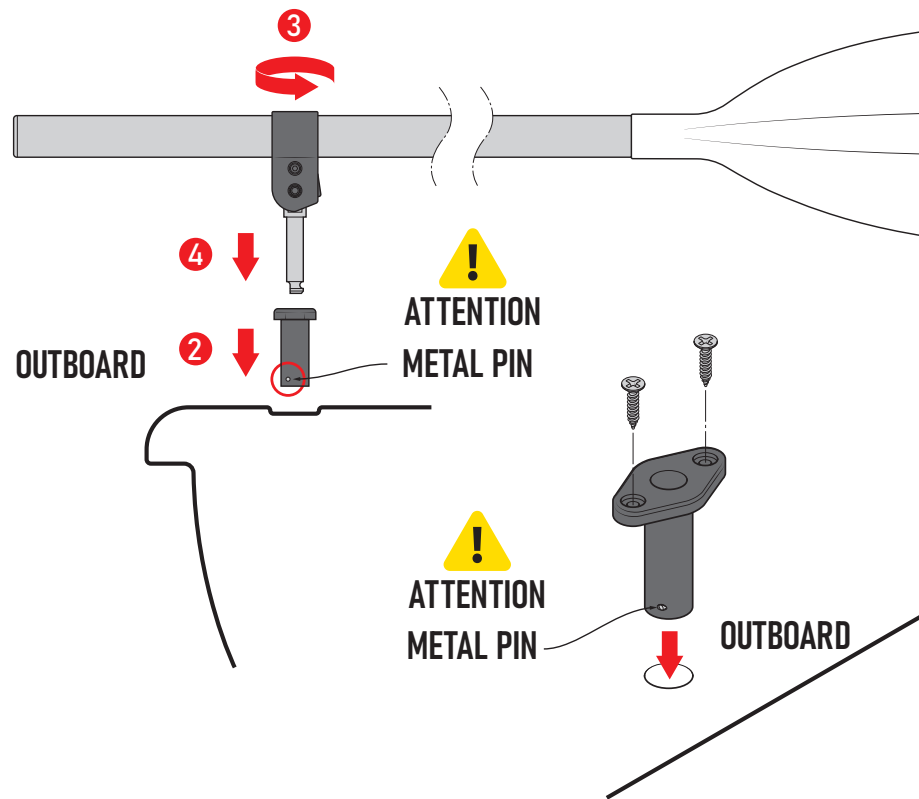


- 3) Replace the end caps onto the oar tubes



## Attaching the 'Oarlock' inserts into the boat

- 1) Remove the blanking plugs from the hull.
- 2) Fit the insert into the hole in the deck. **WARNING** Make sure the metal pin in the insert is positioned on the OUTBOARD side. Secure the insert with the 2 self tapping screws provided. Now repeat on the other side of the boat.



- 3) Rotate the oar assembly so that the blade is positioned inboard the boat.
- 4) Insert the oarlock metal pin into the hole in the insert.