

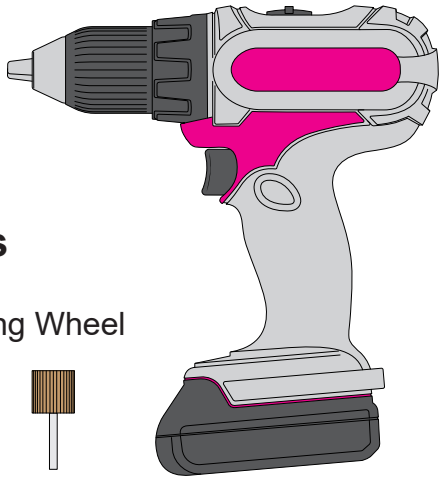


RS
Feva

Mk2 Rudder Stock
Modification Instructions

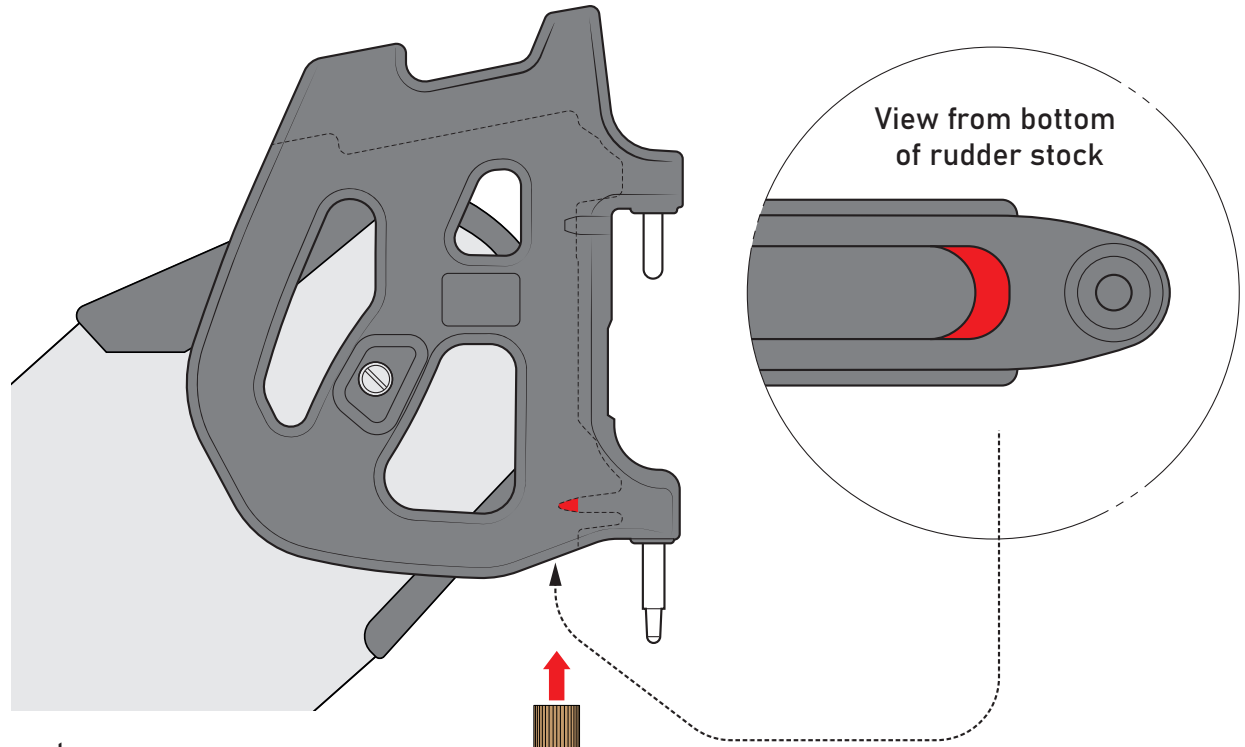
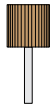
Equipment required

- Hand Drill



• Kit Contents

- 20mm Sanding Wheel



- 1) Lift the blade 45 degrees to locate the protruding stopper notch inside the stock head (It is about 25mm up in the stock.). **Ensure enough room is created to fit the sanding wheel into the stock head.**
- 2) With the sanding wheel attached to a drill, sand the unwanted protruding stopper notch away. The stopper notch needs to be sanded away to match the profile on the bottom of the stock head below. Ensure the side of the stock head is sanded away flush.
- 3) Check the rotation of the blade so that it is located against the bottom part of the rudder stock. Continue sanding the upper stopper notch inside the stock until the blade reaches this position.

